

Sectional Anatomy
Thorax Practice Problems

Figure 2-29

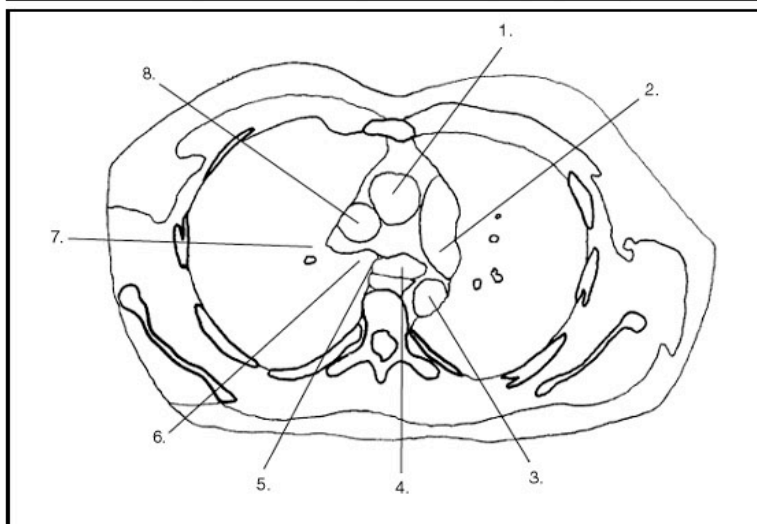
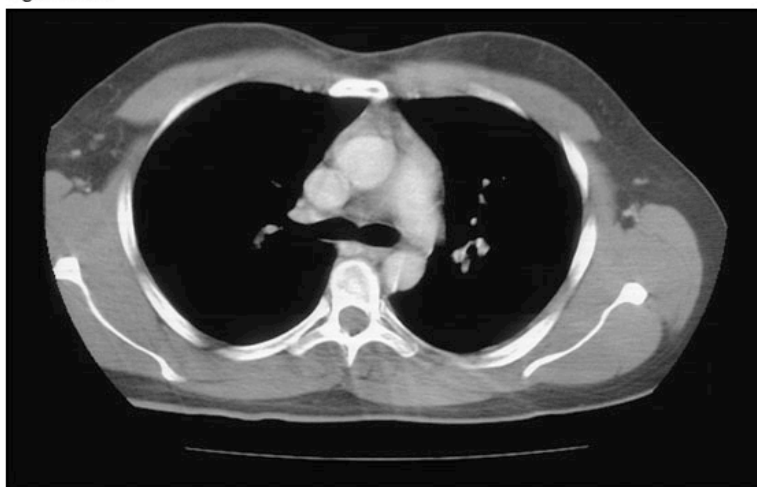


© 2001 Lippincott Williams & Wilkins

1. What number illustrates the left common carotid artery? (Fig. 2-29)
 - A) 2
 - B) 6
 - C) 4
 - D) 3
2. Which of the following is illustrated by #2? (Fig. 2-29)
 - A) left clavicle
 - B) left brachiocephalic vein
 - C) left subclavian artery
 - D) left common carotid artery
3. What number illustrates the origin of the right common carotid artery? (Fig. 2-29)
 - A) 7
 - B) 5
 - C) 6
 - D) 4
4. Which of the following is illustrated by #1? (Fig. 2-29)
 - A) left clavicle
 - B) left brachiocephalic vein
 - C) left subclavian artery
 - D) left common carotid artery
5. Which of the following is illustrated by #6? (Fig. 2-29)
 - A) origin of the right vertebral artery
 - B) origin of the right common carotid artery
 - C) origin of the right subclavian artery
 - D) right brachiocephalic vein

Sectional Anatomy
Thorax Practice Problems

Figure 2-36

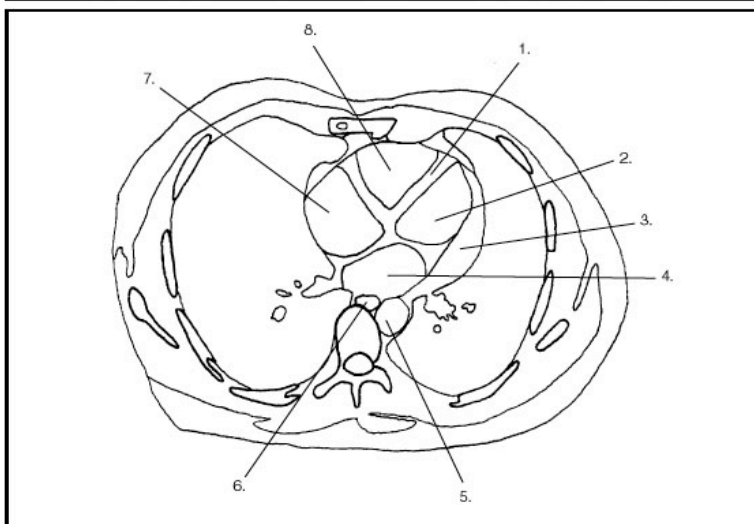
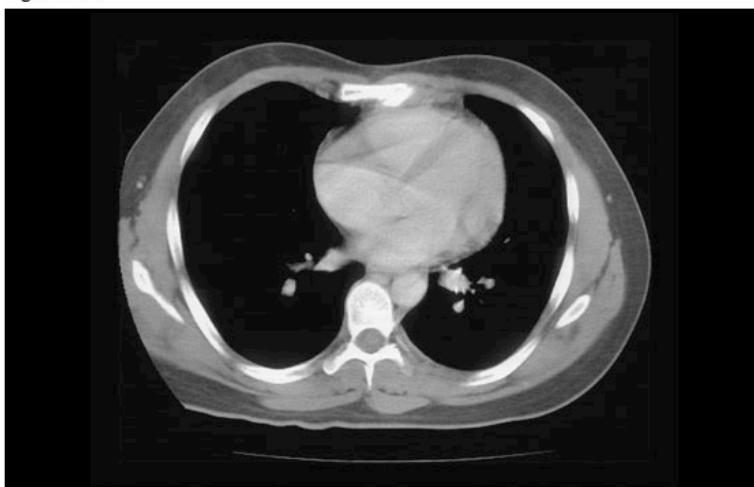


© 2001 Lippincott Williams & Wilkins

- | | |
|---|--|
| <p>6. Which of the following is illustrated by #7? (Fig. 2-36)</p> <p>A) right main bronchus
B) right lower lobe bronchus
C) right upper lobe bronchus
D) carina</p> <p>7. What number illustrates the left main bronchus? (Fig. 2-36)</p> <p>A) 7
B) 4
C) 5
D) 6</p> <p>8. Which of the following is illustrated by #5? (Fig. 2-36)</p> <p>A) descending aorta</p> | <p>B) carina
C) left pulmonary artery
D) ascending aorta</p> <p>9. Which of the following is illustrated by #6? (Fig. 2-36)</p> <p>A) right main bronchus
B) left main bronchus
C) right lower lobe bronchus
D) right upper lobe bronchus</p> <p>10. What number illustrates the left pulmonary artery? (Fig. 2-36)</p> <p>A) 8
B) 2
C) 3
D) 1</p> |
|---|--|

Sectional Anatomy
Thorax Practice Problems

Figure 2-42

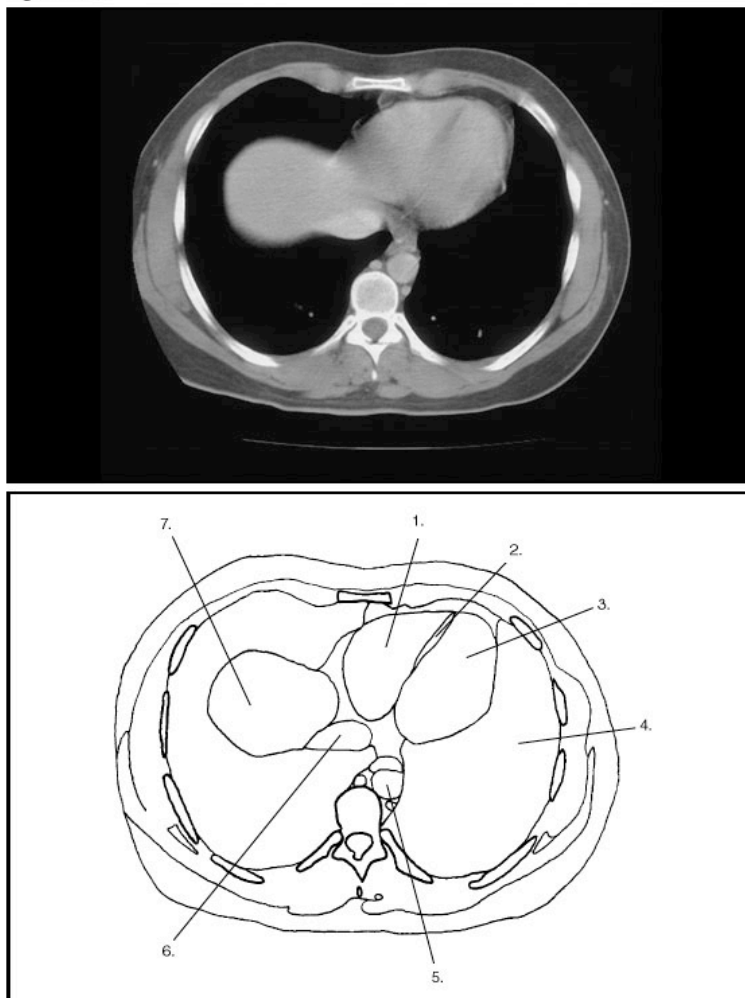


© 2001 Lippincott Williams & Wilkins

- | | |
|---|---|
| <p>11. Which of the following is illustrated by #8? (Fig. 2-42)</p> <p>A) right atrium
B) left ventricle
C) left atrium
D) right ventricle</p> <p>12. What number illustrates the descending aorta? (Fig. 2-42)</p> <p>A) 4
B) 2
C) 5
D) 6</p> <p>13. What number illustrates the ventricular wall? (Fig. 2-42)</p> <p>A) 4</p> | <p>B) 3
C) 1
D) 6</p> <p>14. Which of the following is illustrated by #4? (Fig. 2-42)</p> <p>A) left ventricle
B) left atrium
C) esophagus
D) descending aorta</p> <p>15. Which of the following is illustrated by #7? (Fig. 2-42)</p> <p>A) left atrium
B) right atrium
C) left ventricle
D) right ventricle</p> |
|---|---|

Sectional Anatomy
Thorax Practice Problems

Figure 2-46



© 2001 Lippincott Williams & Wilkins

16. Which of the following is illustrated by #6? (Fig. 2-46)
- A) superior vena cava
 - B) inferior vena cava
 - C) right ventricle
 - D) descending aorta
17. What number illustrates the interventricular septum? (Fig. 2-46)
- A) 2
 - B) 6
 - C) 5
 - D) 4
18. What number illustrates the descending aorta? (Fig. 2-46)
- A) 7
 - B) 3
 - C) 5
 - D) 6
19. Which of the following is illustrated by #7? (Fig. 2-46)
- A) left ventricle
 - B) right ventricle
 - C) stomach
 - D) liver
20. Which of the following is illustrated by #3? (Fig. 2-46)
- A) left atrium
 - B) left ventricle
 - C) right ventricle
 - D) liver