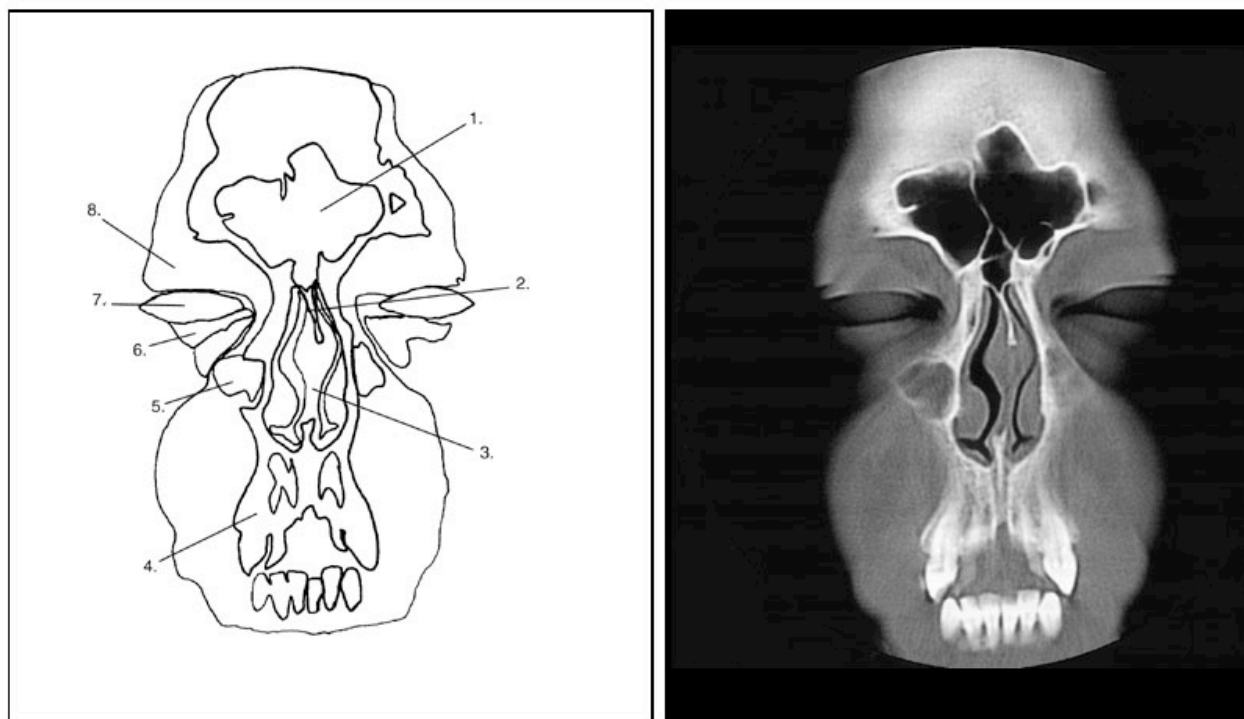


Sectional Anatomy
Head Practice Problems

Figure 5-42

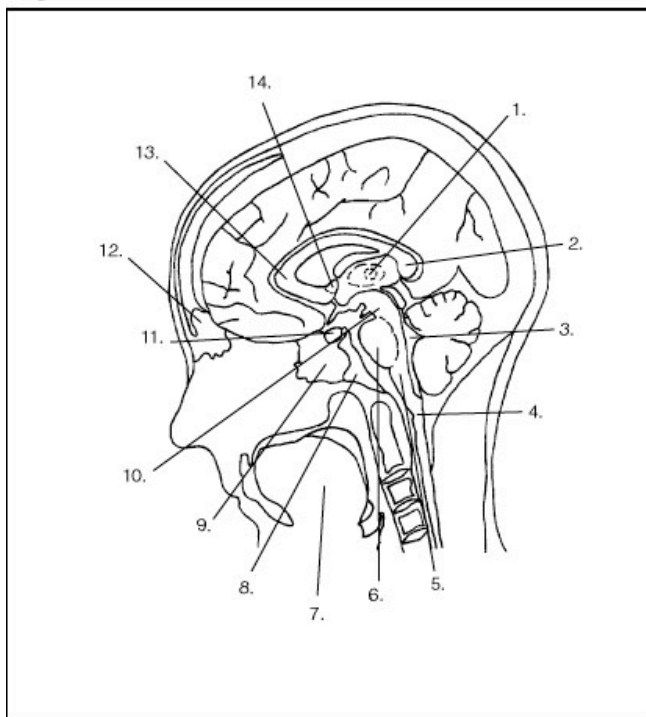


© 2001 Lippincott Williams & Wilkins

1. Which of the following is illustrated by #3? (Fig. 5-42)
 - A) maxillary sinus
 - B) vomer
 - C) septal cartilage
 - D) perpendicular plate of ethmoid bone
2. What number illustrates the cornea? (Fig. 5-42)
 - A) 5
 - B) 6
 - C) 7
 - D) 8
3. What number illustrates the perpendicular plate of ethmoid? (Fig. 5-42)
 - A) 2
 - B) 3
 - C) 4
 - D) 5
4. Which of the following is illustrated by #5? (Fig. 5-42)
 - A) maxillary sinus
 - B) vomer
 - C) perpendicular plate of ethmoid
 - D) ethmoid sinus
5. What number illustrates the maxilla? (Fig. 5-42)
 - A) 4
 - B) 8
 - C) 2
 - D) 1

Sectional Anatomy Head Practice Problems

Figure 5-25

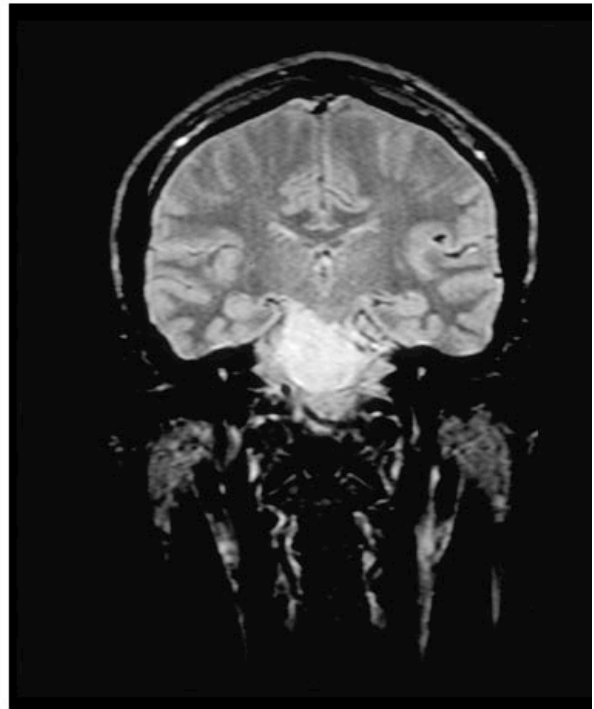
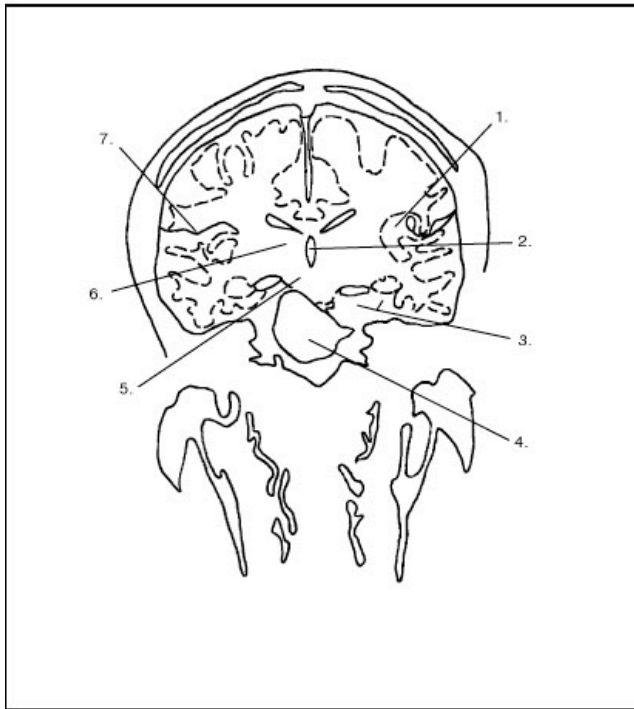


© 2001 Lippincott Williams & Wilkins

- | | |
|---|---|
| <p>6. Which illustrates the cerebral peduncles? (Fig. 5-25)</p> <p>A) 10</p> <p>B) 9</p> <p>C) 8</p> <p>D) 6</p> <p>7. Which of the following is illustrated by #3? (Fig. 5-25)</p> <p>A) medulla oblongata</p> <p>B) pons</p> <p>C) sphenoid sinus</p> <p>D) fourth ventricle</p> <p>8. What number illustrates the splenium of corpus callosum? (Fig. 5-25)</p> <p>A) 1</p> | <p>B) 13</p> <p>C) 2</p> <p>D) 14</p> <p>9. Which number illustrates the sphenoid sinus? (Fig. 5-25)</p> <p>A) 10</p> <p>B) 9</p> <p>C) 8</p> <p>D) 7</p> <p>10. Which of the following is illustrated by #1? (Fig. 5-25)</p> <p>A) head of caudate nucleus</p> <p>B) anterior commissure</p> <p>C) intermediate mass</p> <p>D) splenium of corpus callosum</p> |
|---|---|

Sectional Anatomy
Head Practice Problems

Figure 5-33

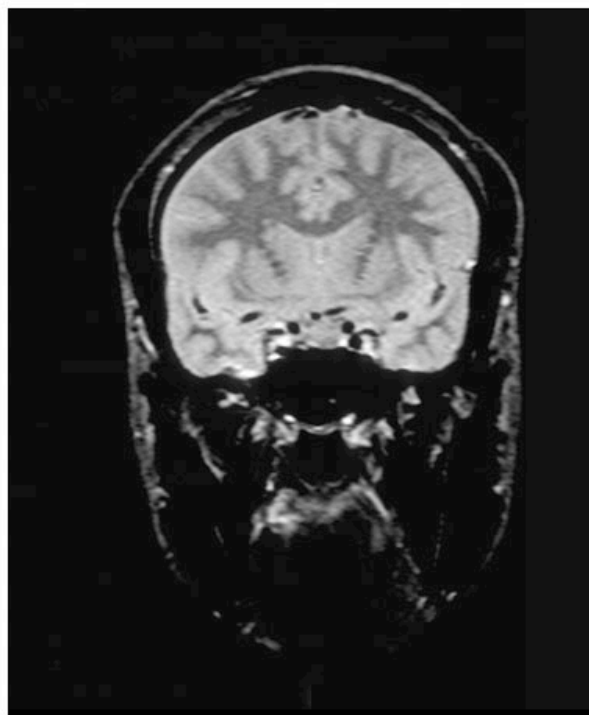
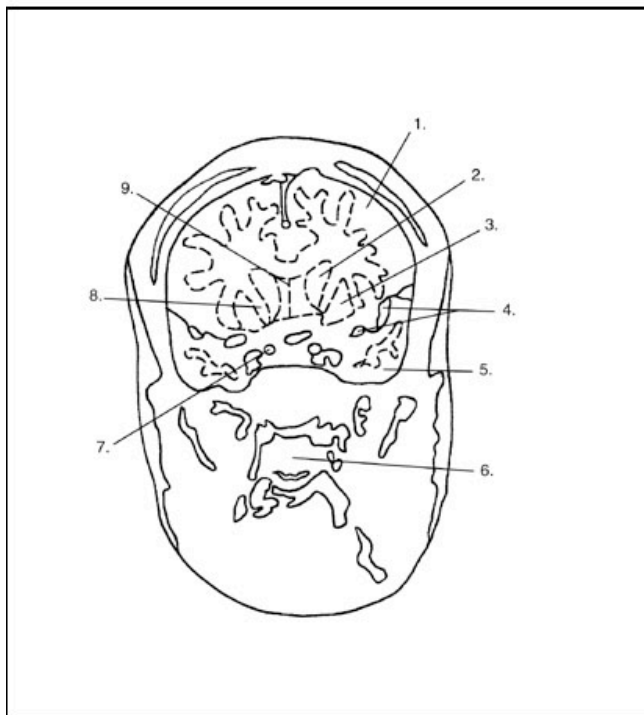


© 2001 Lippincott Williams & Wilkins

11. Which of the following is illustrated by #3? (Fig. 5-33)
 - A) hippocampal formation
 - B) Sylvian fissure
 - C) head of caudate nucleus
 - D) quadrigeminal plate
12. What number illustrates the insula? (Fig. 5-33)
 - A) 6
 - B) 5
 - C) 7
 - D) 1
13. Which of the following is illustrated by #2? (Fig. 5-33)
 - A) pineal gland
 - B) third ventricle
 - C) pons
 - D) cerebral aqueduct
14. Which of the following is illustrated by #6? (Fig. 5-33)
 - A) Sylvian fissure
 - B) thalamus
 - C) insula
 - D) lenticular nuclei
15. What number illustrates the cerebral peduncles? (Fig. 5-33)
 - A) 3
 - B) 6
 - C) 1
 - D) 5

Sectional Anatomy
Head Practice Problems

Figure 5-39

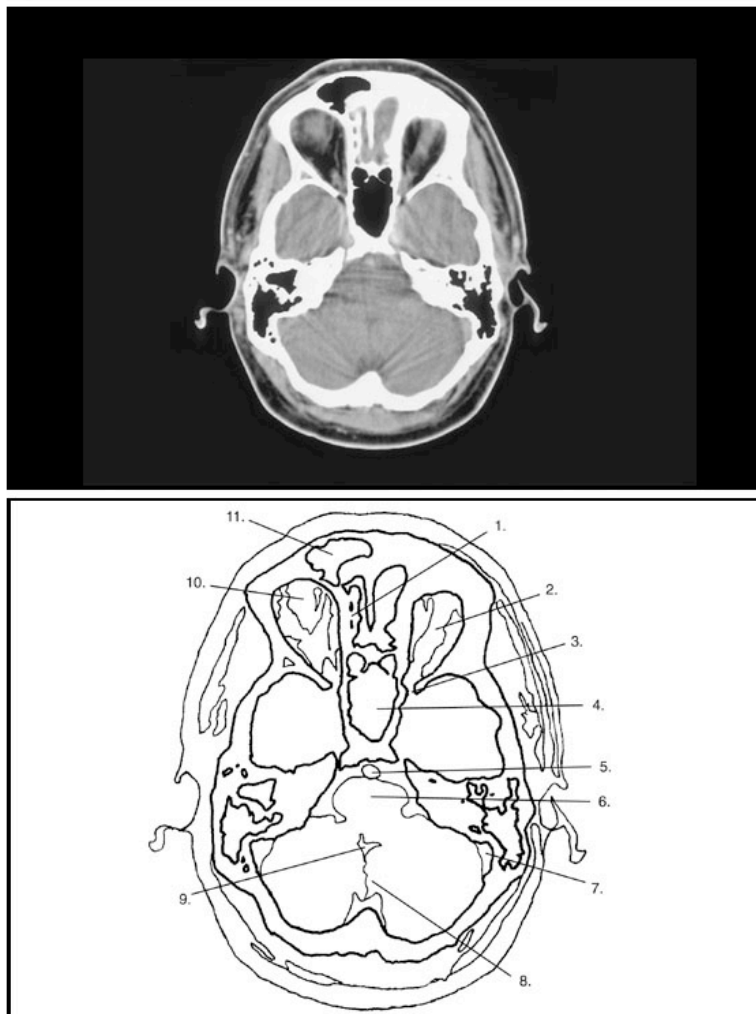


© 2001 Lippincott Williams & Wilkins

16. Which of the following is illustrated by #8? (Fig. 5-39)
- A) internal capsule
 - B) head of caudate nucleus
 - C) globus pallidus
 - D) septum pellucidum
17. Which of the following is illustrated by #3? (Fig. 5-39)
- A) head of caudate nucleus
 - B) septum pellucidum
 - C) lenticular nuclei
 - D) internal carotid artery
18. What number illustrates the septum pellucidum? (Fig. 5-39)
- A) 8
 - B) 3
 - C) 2
 - D) 9
19. What number illustrates the internal carotid artery? (Fig. 5-39)
- A) 7
 - B) 3
 - C) 2
 - D) 4
20. Which of the following is illustrated by #6? (Fig. 5-39)
- A) sphenoid sinus
 - B) nasopharynx
 - C) mastoid sinus
 - D) oropharynx

Sectional Anatomy Head Practice Problems

Figure 5-49

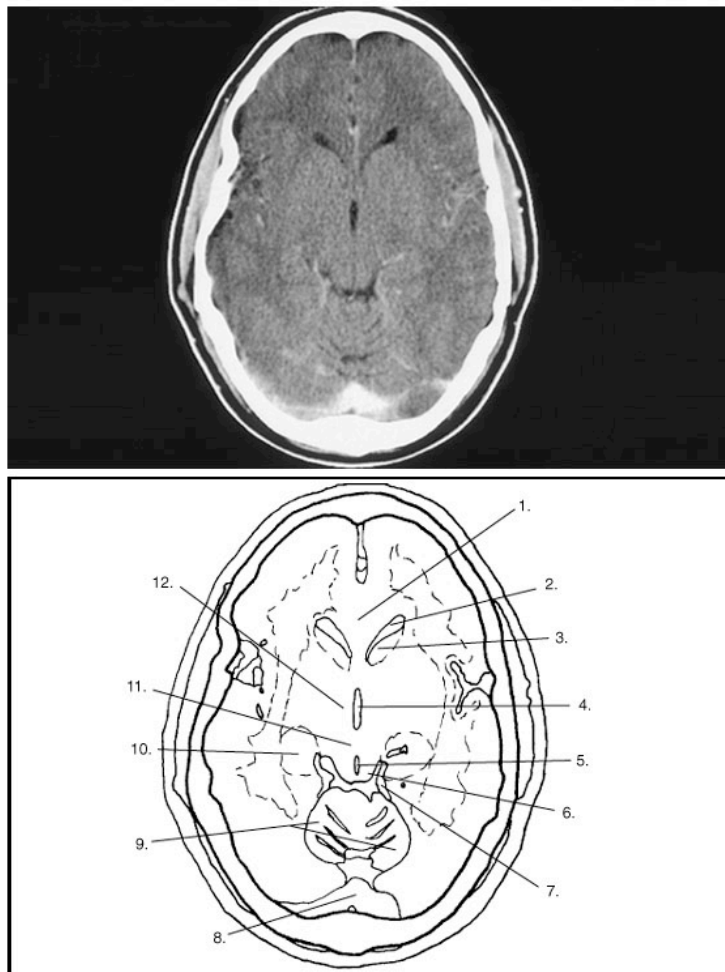


© 2001 Lippincott Williams & Wilkins

21. What number illustrates the cribriform plate of the ethmoid bone? (Fig. 5-49)
- A) 2
B) 11
C) 4
D) 1
22. Which of the following is illustrated by #6? (Fig. 5-49)
- A) pons
B) medulla oblongata
C) cerebellar vermis
D) cerebral peduncles
23. What number illustrates the basilar artery? (Fig. 5-49)
- A) 6
B) 4
C) 5
D) 9
24. Which of the following is illustrated by #9? (Fig. 5-49)
- A) fourth ventricle
B) basilar artery
C) superior cistern
D) inferior sagittal sinus
25. Which of the following is illustrated by #4? (Fig. 5-49)
- A) ethmoid air cells
B) mastoid air cells
C) sigmoid sinus
D) sphenoid sinus

Sectional Anatomy Head Practice Problems

Figure 5-53

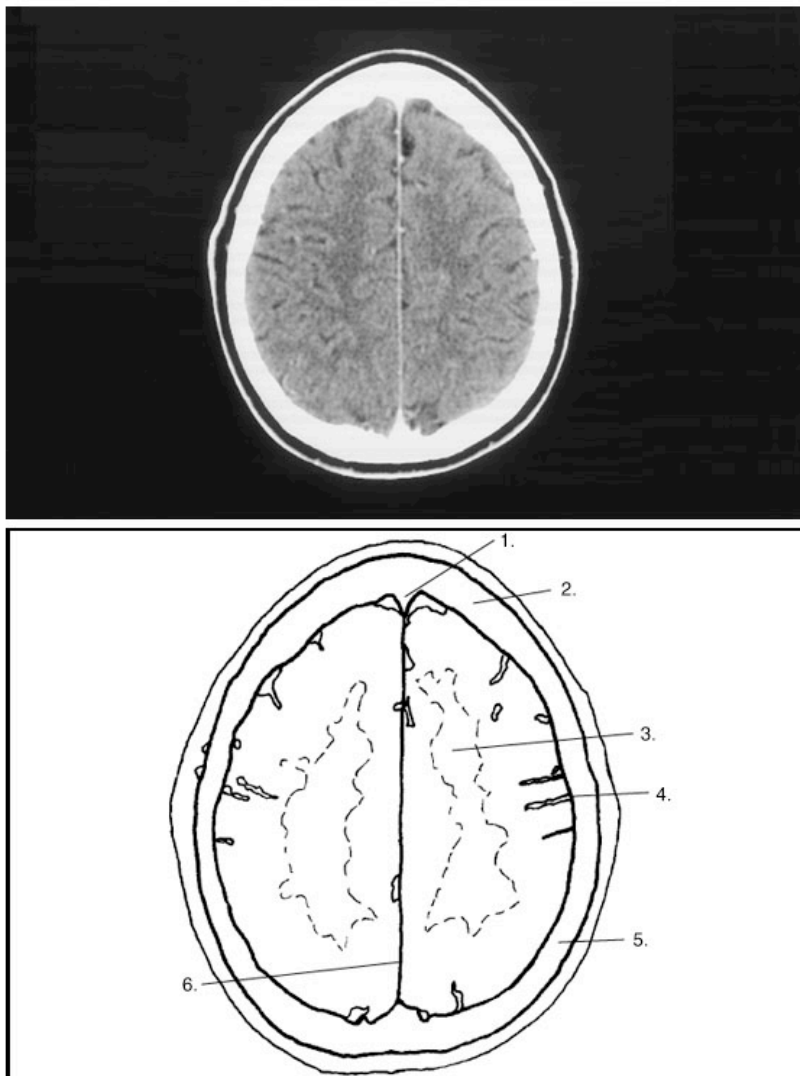


© 2001 Lippincott Williams & Wilkins

26. What number illustrates the quadrigeminal plate? (Fig. 5-53)
- A) 6
B) 2
C) 7
D) 3
27. What number illustrates the cerebral peduncles? (Fig. 5-53)
- A) 6
B) 11
C) 10
D) 12
28. Which of the following is illustrated by #4? (Fig. 5-53)
- A) fourth ventricle
B) cerebral aqueduct
C) third ventricle
D) superior cistern
29. What number illustrates the hippocampal formation? (Fig. 5-53)
- A) 3
B) 6
C) 11
D) 10
30. What number illustrates the posterior cerebral artery? (Fig. 5-53)
- A) 7
B) 4
C) 8
D) 5

Sectional Anatomy Head Practice Problems

Figure 5-60

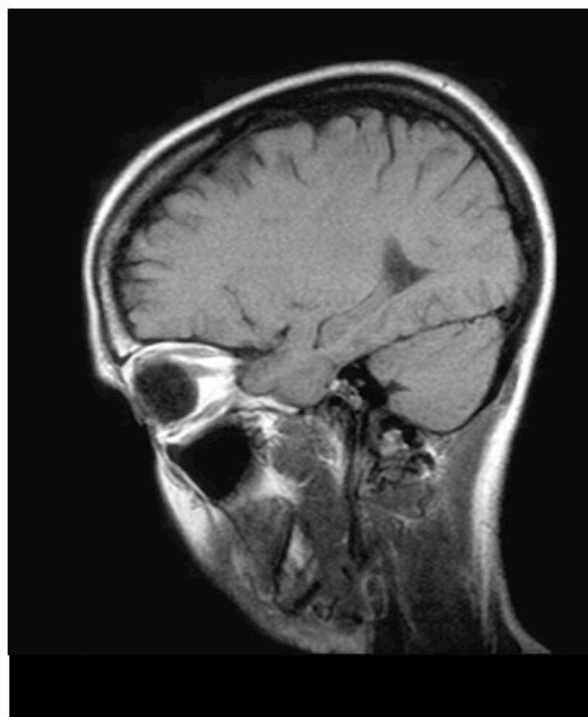
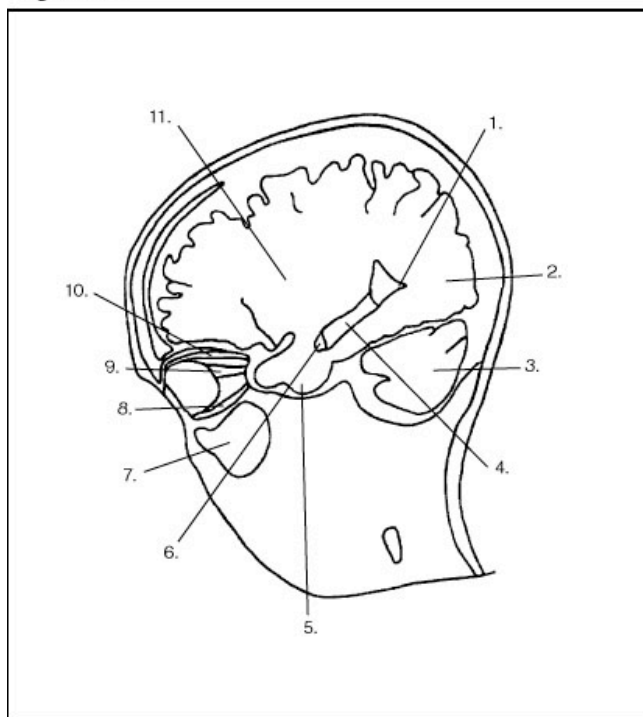


© 2001 Lippincott Williams & Wilkins

- | | |
|---|---|
| <p>31. Which of the following is illustrated by #2? (Fig. 5-60)</p> <ul style="list-style-type: none"> A) scalp B) frontal lobe C) parietal bone <p>32. Which of the following is illustrated by #4? (Fig. 5-60)</p> <ul style="list-style-type: none"> A) corona radiata B) Sylvian fissure C) central sulcus D) tentorium cerebelli <p>33. Which of the following is illustrated</p> | <p>by #3? (Fig. 5-60)</p> <ul style="list-style-type: none"> A) central sulcus B) corona radiata C) gray matter D) none of the above <p>34. Which of the following is illustrated by #6? (Fig. 5-60)</p> <ul style="list-style-type: none"> A) anterior cerebral artery B) falx cerebri C) tentorium cerebelli D) superior sagittal sinus |
|---|---|

Sectional Anatomy Head Practice Problems

Figure 5-22

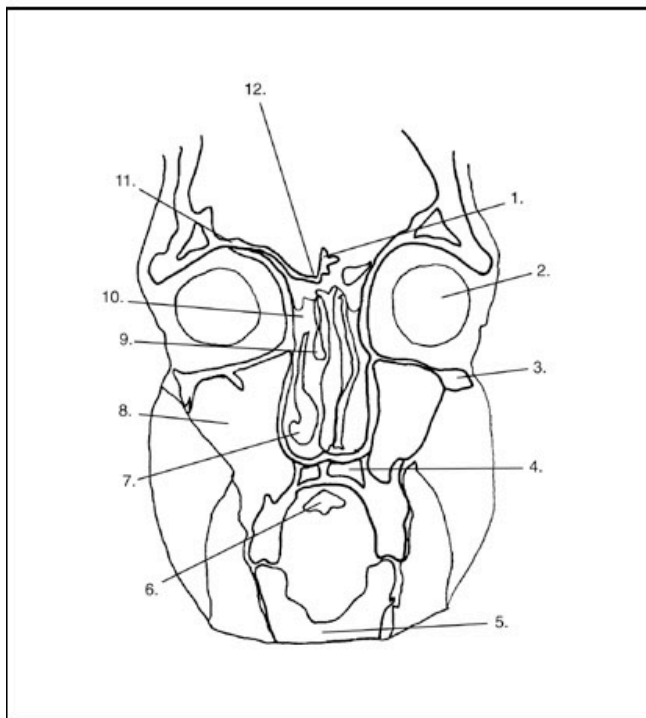


© 2001 Lippincott Williams & Wilkins

35. Which of the following is illustrated by #4? (Fig. 5-22)
- A) posterior horn of the lateral ventricle
 - B) body of caudate nucleus
 - C) thalamus
 - D) inferior horn of the lateral ventricle
36. What number illustrates the inferior horn of the lateral ventricle? (Fig. 5-22)
- A) 6
 - B) 4
 - C) 1
 - D) 7
37. Which of the following is illustrated by #1? (Fig. 5-22)
- A) body of caudate nucleus
 - B) insula
 - C) posterior horn of the lateral ventricle
 - D) inferior horn of the lateral ventricle
38. Which of the following is illustrated by #9? (Fig. 5-22)
- A) superior rectus muscle
 - B) inferior rectus muscle
 - C) optic nerve
 - D) fat in bony orbit
39. What number illustrates the superior rectus muscle? (Fig. 5-22)
- A) 9
 - B) 6
 - C) 8
 - D) 10

Sectional Anatomy
Head Practice Problems

Figure 5-45



© 2001 Lippincott Williams & Wilkins

40. Which of the following is illustrated by #10? (Fig. 5-45)
- A) sphenoid sinus
 - B) ethmoid sinus
 - C) frontal sinus
 - D) none of the above
41. What number illustrates the middle concha? (Fig. 5-45)
- A) 7
 - B) 8
 - C) 9
 - D) 10
42. What number illustrates the cribriform plate? (Fig. 5-45)
- A) 10
 - B) 11
 - C) 12
 - D) 1
43. What number illustrates the mandible? (Fig. 5-45)
- A) 4
 - B) 5
 - C) 6
 - D) 7
44. Which of the following is illustrated by #1? (Fig. 5-45)
- A) crista galli
 - B) perpendicular plate of ethmoid
 - C) vomer
 - D) cribriform plate