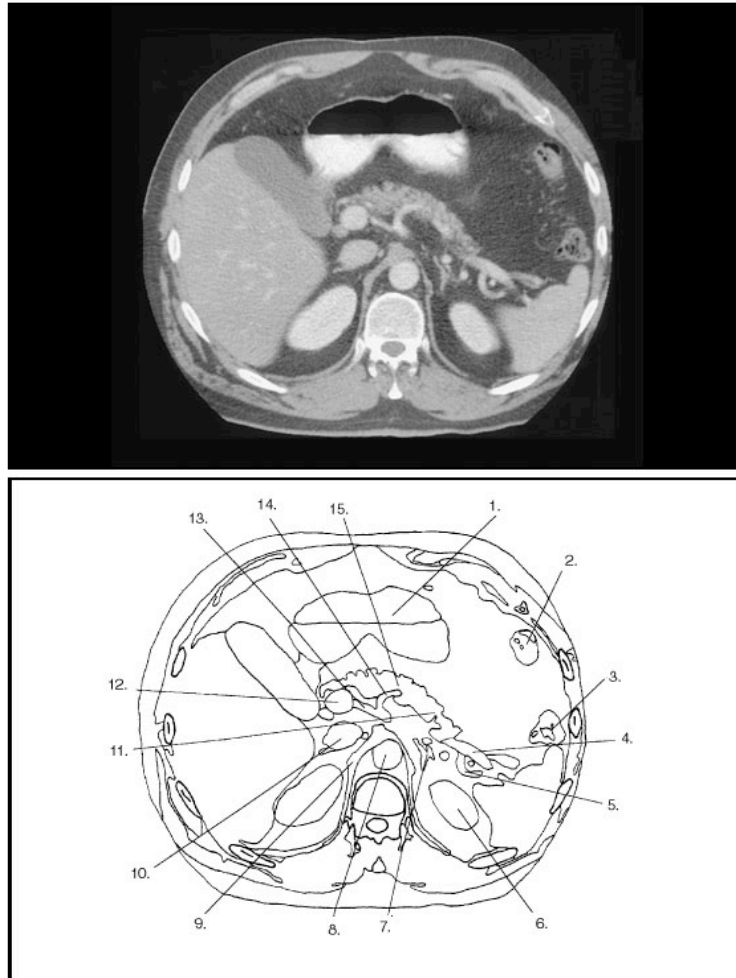


Sectional Anatomy  
Abdomen Practice Problems

Figure 3-25

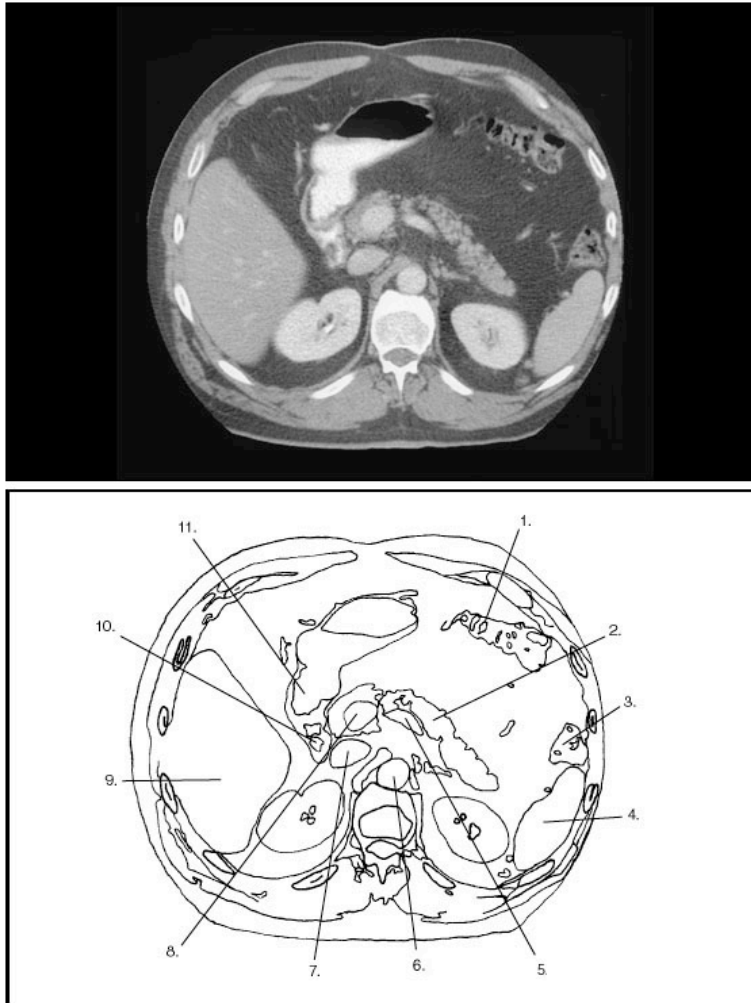


© 2001 Lippincott Williams & Wilkins

1. Which of the following is illustrated by #13? (Fig. 3-25)
  - A) hepatic artery
  - B) splenic artery
  - C) celiac trunk
  - D) cystic duct
2. What number illustrates the transverse colon? (Fig. 3-25)
  - A) 2
  - B) 3
  - C) 1
  - D) 15
3. Which of the following is illustrated by #11? (Fig. 3-25)
  - A) body of pancreas
  - B) stomach
  - C) duodenum
  - D) tail of pancreas
4. Which of the following is illustrated by #6? (Fig. 3-25)
  - A) left adrenal gland
  - B) left kidney
  - C) splenic flexure of colon
  - D) spleen
5. What number illustrates the splenic artery? (Fig. 3-25)
  - A) 13
  - B) 5
  - C) 4
  - D) 7

Sectional Anatomy  
Abdomen Practice Problems

Figure 3-27



© 2001 Lippincott Williams & Wilkins

- |   |   |
|---|---|
| <p>6. Which of the following is illustrated by #2? (Fig. 3-27)</p> <p>A) splenic vein<br/>B) body of pancreas<br/>C) portal vein<br/>D) duodenum</p> <p>7. What number illustrates the first part of the small bowel? (Fig. 3-27)</p> <p>A) 7<br/>B) 2<br/>C) 11<br/>D) 10</p> <p>8. What number illustrates the descending or abdominal aorta? (Fig. 3-27)</p> <p>A) 7</p> | <p>B) 2<br/>C) 6<br/>D) 5</p> <p>9. Which of the following is illustrated by #9? (Fig. 3-27)</p> <p>A) liver<br/>B) spleen<br/>C) body of pancreas<br/>D) pyloric antrum of stomach</p> <p>10. Which of the following is illustrated by #1? (Fig. 3-27)</p> <p>A) descending colon<br/>B) transverse colon<br/>C) ascending colon<br/>D) duodenum</p> |
|---|---|

Sectional Anatomy  
Abdomen Practice Problems

Figure 3-32



© 2001 Lippincott Williams & Wilkins

11. What number illustrates the abdominal aorta? (Fig. 3-32)
  - A) 4
  - B) 8
  - C) 5
  - D) 6
12. Which of the following is illustrated by #6? (Fig. 3-32)
  - A) right renal vein
  - B) right renal artery
  - C) right ureter
  - D) azygos vein
13. Which of the following is illustrated by #8? (Fig. 3-32)
  - A) celiac vessels
  - B) superior mesenteric vessels
  - C) inferior mesenteric vessels
  - D) loops of small bowel
14. Which of the following is illustrated by #3? (Fig. 3-32)
  - A) ascending colon
  - B) small bowel
  - C) cecum
  - D) descending colon
15. What number illustrates the ascending colon? (Fig. 3-32)
  - A) 2
  - B) 1
  - C) 3
  - D) 7

Sectional Anatomy  
Abdomen Practice Problems

Figure 3-37



© 2001 Lippincott Williams & Wilkins

16. What number illustrates the cecum? (Fig. 3-37)  
 A) 5  
 B) 6  
 C) 7  
 D) 8
17. What number illustrates the bifurcation of aorta (common iliac artery)? (Fig. 3-37)  
 A) 3  
 B) 8  
 C) 5  
 D) 6
18. What number illustrates the descending colon? (Fig. 3-37)  
 A) 1  
 B) 2  
 C) 7  
 D) 8
19. Which of the following is illustrated by #7? (Fig. 3-37)  
 A) descending colon  
 B) ascending colon  
 C) small bowel  
 D) cecum
20. What number illustrates the small bowel? (Fig. 3-37)  
 A) 1  
 B) 3  
 C) 2  
 D) 7

Sectional Anatomy  
Abdomen Practice Problems

Figure 3-41



© 2001 Lippincott Williams & Wilkins

21. Which of the following is illustrated by #7? (Fig. 3-41)
- A) ureter  
B) right common iliac vein  
C) right internal iliac vein  
D) right common iliac artery
22. Which of the following is illustrated by #3? (Fig. 3-41)
- A) small bowel  
B) psoas muscle  
C) right common iliac vein  
D) cecum
23. What number illustrates the cecum? (Fig. 3-41)
- A) 2  
B) 3  
C) 1  
D) 9
24. What number illustrates the ureter? (Fig. 3-41)
- A) 4  
B) 8  
C) 7  
D) 5
25. Which of the following is illustrated by #1? (Fig. 3-41)
- A) cecum  
B) left psoas muscle  
C) small bowel  
D) transverse colon